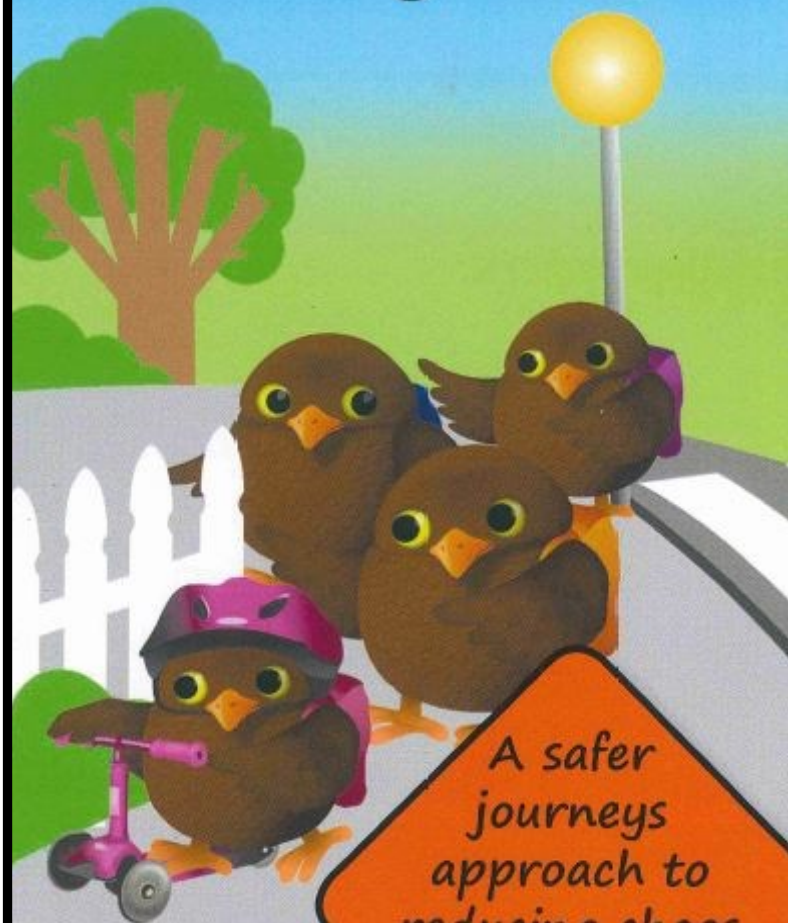


Otonga School Parking and Travel Planning Guide



*A safer
journeys
approach to
reducing chaos
at our school
gate*



Alternate Options



KEY

- Jackson Park Kindy drop off
- Jackson Reserve entrance
- Rugby Footpath
- McDowell St drop off
- ◀ McDowell St circuit

DROP OFF / PICK-UP ZONE

This zone is a quick and safe area to drop off and pick up children. The zone requires drivers to maintain a continuous flow for it to be effective. Please be considerate of others. If your child is not ready we request that you move out of the area. If you leave your vehicle unattended it will be monitored and reported to enforcement.

The main issue concerning the roads and traffic flow is consideration of others

Making traffic flow easier:

- Consider arriving a little later to pick up children (by 3.10pm, the street is half empty)
- Make a plan with your child. Find pick-up/drop off points a little distance away from the school (e.g Above Kiwi Street going up Otonga Road) for drop off and collection.

Use Jackson Park Kindy drop off.
A new path takes you up to school

Walkers and cyclists can use a new footpath on top of Otonga Road, Jackson Reserve entrance.

Use the McDowell Street circuit to put you on the school side of the road.

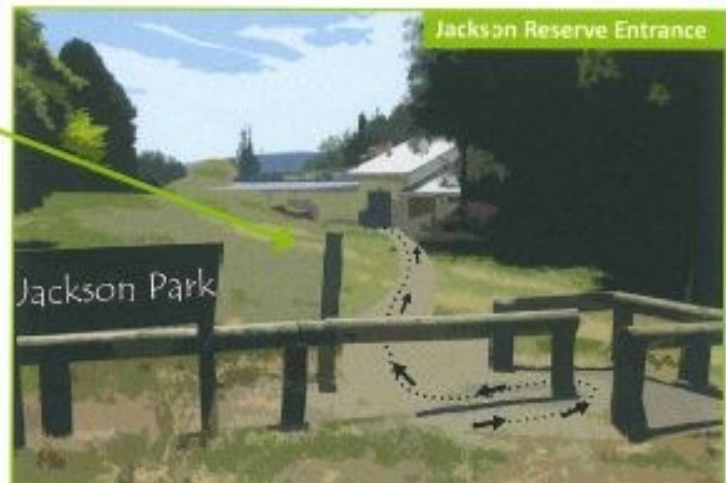
NB: The entrance behind the admin block is for delivery vehicles and office visitors only. It must not be used for dropping off or picking up children.

What else can I do to help my child be safer in or around cars?

- Park on the same side of the road as the school.
- Never call to a child to run across the road.
- Wait until the car has stopped before getting in or out.
- Get in and out of the car from the footpath side only.
- Look out for pedestrians and cyclists when opening the door.

Helmet Safety - cycling, scooting and skating

Ensure your child always wears a helmet when riding their cycle, scooter or skateboard



"We are committed to working with Rotorua Lakes Council to make the streets around our school a safer environment for children, pedestrians and motorists. We want to encourage parents and guardians to choose safe parking over convenience at all times and look for alternative ways to get to and from school to ease congestion at the school gate."

Linda Woon
Otonga Primary Principal

Driving near a school



When children arrive at school and leave school each day, your behaviour can either protect or endanger them

Otonga School has identified issues for improvement around driving and parking:

- ▶ U turns in front of the school (**Illegal**)
- ▶ Parking on the yellow dotted lines, grass verges and crossing points (**Illegal**)
- ▶ Blocking other vehicle movements (**Inconsiderate**)
- ▶ Leaving vehicle unattended in drop off zone or parking for extended periods of time (**Inconsiderate**)
- ▶ Parking in private driveways or over the driveway entrances (**Illegal**)
- ▶ Parking on shared paths (**Illegal**)

The above issues are either illegal or considered a parking offence. If you are caught doing any of these outside the school more than ONCE you can expect a fine of between \$40 and \$60.

Please choose safe parking over convenience at all times.

If you witness recurring offences please contact:
roadsafety.rotorua@rotorualc.nz
with time, date and vehicle details – photo optional

The Walking School Bus



Why do we need it?

In New Zealand, over half of primary school children are driven to and from school. This is nearly double the number 10 years ago.

As a result we are seeing more traffic congestion around the school gate, often creating an unsafe environment for children crossing the road and getting in and out of vehicles.

How does it work?

Parents volunteer to be rostered to walk with a group of children to school. The children are picked up at special bus stops on a set route by a parent 'driver'.

Parents may only be required to help one or two days a week.

Do you want to be part of a Walking School Bus in your area?

Rotorua Lakes Council is keen to see this simple formula being used by more schools in Rotorua.

Talk to your school about your child joining a Walking School Bus or contact Rotorua Lakes Council to find out how you can get involved.

**For further information contact:
roadsafety.rotorua@rotorualc.nz**